

4

3

2

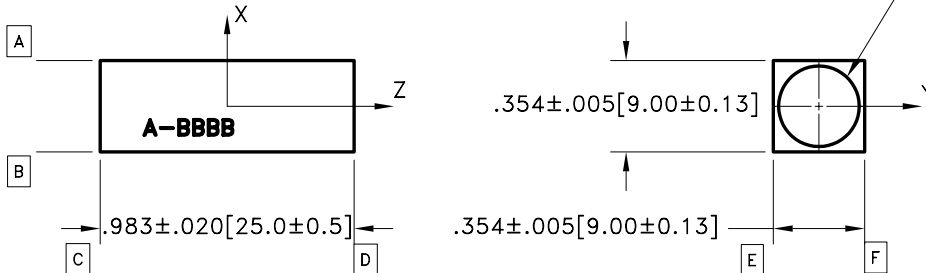
1

NOTES: UNLESS OTHERWISE SPECIFIED

1. ALL SPECIFICATIONS ARE IN ACCORDANCE WITH MIL-O-13830.
2. MATERIAL: LITHIUM NIOBATE (LiNbO_3)
3. ORIENTATION: Z AXIS ± 10 ARC MINUTES TO END FACES, X AND Y AXIS TO X AND Y FACES ± 30 ARC MINUTES.
4. SURFACES MARKED [C] AND [D] TO BE POLISHED, ALL OTHERS AS-CUT OR GROUND.
5. CLEAR APERTURE: ENT .312 MINIMUM, EXIT .312 MINIMUM.
6. ENDS PARALLEL: < 10 ARC SEC.
7. END SURFACE FLATNESS (AT $.633\mu\text{m}$): $< \text{OR} = \text{TO } 1/8$.
8. END SURFACE QUALITY (SCRATCH-DIG): 20-10 OVER CLEAR APERTURE.
9. WAVE FRONT DISTORTION: $< \text{OR} = 1/8$ LAMBDA AT $.633\mu\text{m}$ IN THE CLEAR APERTURE (SINGLE PASS).
10. CHAMFER: $.010-.015 \times 45^\circ$ NOMINAL ALL EDGES.
11. COAT SURFACES MARKED [C] AND [D] PER MIL-C-675 OVER THE TEMPERATURE RANGE FROM -55° TO $+71^\circ\text{C}$, TYPE: ANTIREFLECTION, FOR LAMBDA = $1.064\mu\text{m}$ INCIDENT AT 0° , REFLECTANCE $< \text{OR} = .25\%$ PER SURFACE, DAMAGE THRESHOLD: $200 \times 10^6 \text{ W}/\text{CM}^2$, 20NSEC NOM PULSEWIDTH.
12. ELECTRODE CONFIGURATION: TRANSVERSE MODE WITH SURFACES [A] AND [B] EVAPORATED GOLD, 2000 Å MINIMUM. 90% MINIMUM SURFACE COVERAGE.
13. EXTINCTION RATIO: 20dB OR BETTER AT $.633\mu\text{m}$.
14. MARK SURFACE [E] WITH AR COATING RUN NUMBER: A-BBBB.
15. MARK SURFACE [F] WITH THE FOLLOWING INFORMATION:
 - a). CTI SOCN: 50559
 - b). CTI SERIAL NUMBER: SSSSS
 - c). ARROW TO IDENTIFY TESTED DIRECTION:


REVISIONS

ZONE	REV	DESCRIPTION	ECO NO.	APPD.	DATE
ALL	C	REVISE PER ECO	8782	NGO	01-07-97



**For Reference
Only**

THIS DOCUMENT IS THE PROPERTY OF CRYSTAL TECHNOLOGY, INC. IT IS NOT TO BE REPRODUCED OR DISCLOSED IN WHOLE OR IN PART OTHER THAN BY EMPLOYEES OF CRYSTAL TECHNOLOGY AND ITS CONTRACTED REPRESENTATIVES AND DISTRIBUTORS. ANY EXCEPTION REQUIRES THE WRITTEN CONSENT OF AN AUTHORIZED REPRESENTATIVE OF CRYSTAL TECHNOLOGY.

FINISH: SEE NOTES	CONTRACT NUMBER	 Crystal Technology, Inc. A Siemens Company		
MATERIAL: 2.	DR. TOM-NGO 06-24-96			
SPEC. NO. 2.	CHK.	TITLE: EOQS 7100-1		
UNLESS OTHERWISE SPECIFIED DIMENSIONS ARE IN IN [MM]	APPD.	200 MW/CM ² DAMAGE THRESHOLD		
TOLERANCES		SIZE B		
INCHES	MILLIMETERS	DWG. NO. 99-48205-01		
.X ± .1	X ± 0.5	REV. C		
.XX ± .01	.X ± 0.1	SCALE: 2:1		
.XXX ± .005	XXX ± 0.1	SH. 1 OF 1		
ANG ± .5	ANG ± .5	DO NOT SCALE DRAWING		